

## CHECK OF THE PRESENCE AND POSITION OF LABELS, OVERLAP OF ALL AROUND LABELS AND PRINTED DATA - EXAN LABEL CCD



CJSC Oboloň, Kyjev, Ukraine

### USE

- inspection of the presence of labels on bottles in the labelling machine
- inspection of overlapping and incompletely adhered wrap around labels
- possibility to check the date
- performance output up to 40.000 bottles/hour
- glass and PET bottles
- can be applied to existing labelling machines

### DESCRIPTION OF FUNCTION

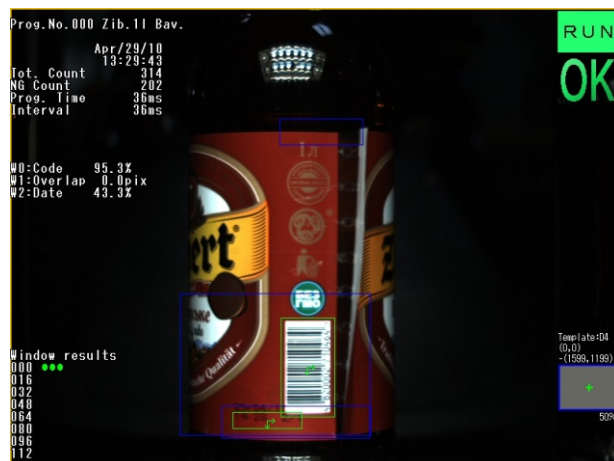
- the equipment is controlled using a SIEMENS S7 system
- the presence of labels is inspected using a camera (this camera is installed in the labelling machine)
- elimination is conducted using the pneumatic eliminator, the "Push" system - on the accumulation eliminating table or into a container (PET bottles)
- components used:
  - Keyence cameras
  - Hoerbiger pneumatics - serves to eliminate bottles
  - LEUZE or OMRON sensor



EXAN LABEL, case and scrap - CJSC Oboloň, Kyjev, Ukraine

### EXAMPLE OF A SOLUTION

- CJSC Obolon, Kyjev, Ukraine
  - application to the GERNEP Rollfed labelling machine
  - 1.0l, 2.0l PET bottles
  - output 22.000 bottles/hour
- Brewery Svijany a.s., Czech republic
  - check of 3 labels and data using 2 cameras
  - 0.5 l NRW bottle
  - výkon zařízení 15 000 lahví/hodinu



EXAN LABEL cscreen - CJSC Oboloň, Kyjev, Ukraine

